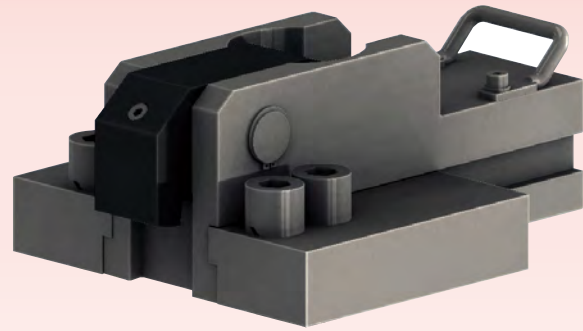


# Hydraulic Clamp

Manual Block-Slide

Model **GBM**

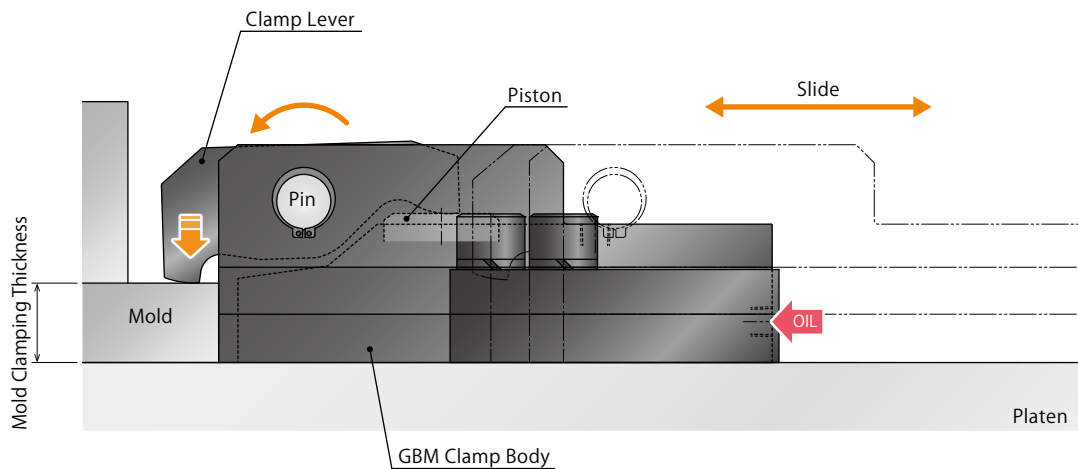


## Hydraulic Clamp for an IMM without T-Slot

Suitable for Non-Standardized Mold Widths

Longer stroke allows for variation in mold clamping thicknesses.

### ● Action Description



#### Locking Operation

Slide GBM clamp to the mold by hand.  
When hydraulic pressure is supplied, the piston lifts up, and the clamp lever pivots on the pin and locks the mold.

#### Releasing Operation

When hydraulic pressure is released, the piston descends with built-in spring force, and the clamp lever becomes released state with the lever return spring. Slide GBM clamp back by hand.

## System Structure Example

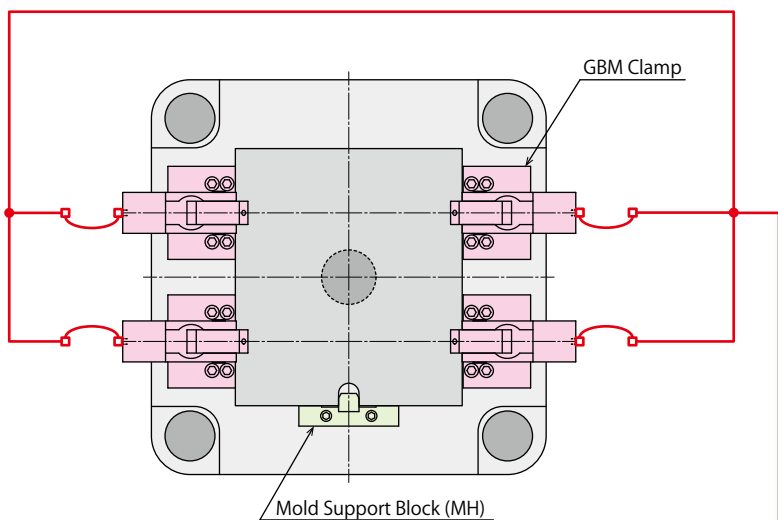
The basic structure with GBM clamp that is slid manually in the fixed block.

This system is able to control one stationary platen circuit and two movable platen circuits with a three-circuit hydraulic unit.

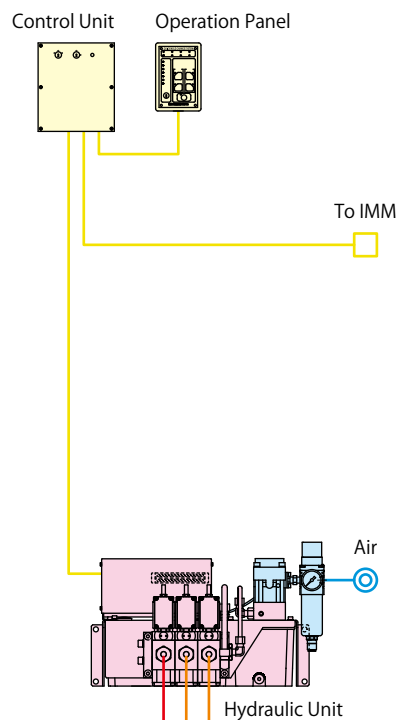
Hydraulic Clamp : GBM Clamp

Hydraulic Unit : CP□□ Unit

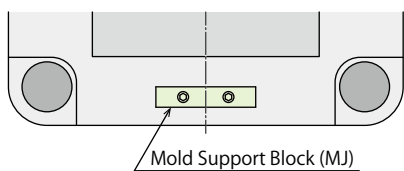
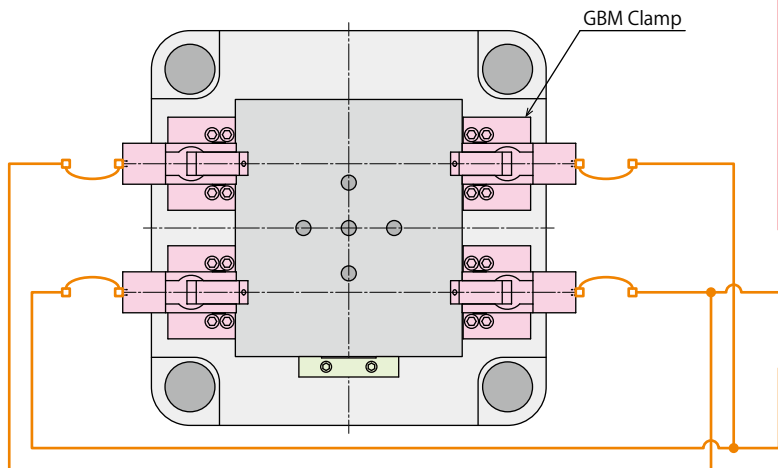
Stationary Platen



- Stationary Platen Hydraulic Circuit
- Movable Platen Hydraulic Circuit
- Electrical Circuit



Movable Platen



● Model No. Indication

**GBM** **040** **0** - **30** - **P** - **5**

1   2   3   4   5

### 1 Clamping Force

- 025** : Clamping Force= 25kN
- 040** : Clamping Force= 40kN
- 063** : Clamping Force= 63kN
- 100** : Clamping Force= 100kN
- 160** : Clamping Force= 160kN

### 2 Design No.

- 0** : Revision Number

### 3 Mold Clamping Thickness

- 30** : Mold Clamping Thickness h=30mm
- 50** : Mold Clamping Thickness h=50mm

### 4 Option ※ Please contact us for specifications/external dimensions.

- H** : Extra Height Body (When h dimension is more than max. h dimension shown in the external dimension.)
- L□** : Wide Lever (For U-Cut of Mold) ※<sup>1</sup>
- N** : NPT Port ※<sup>2</sup>
- P** : With Mold Confirmation Proximity Switch
- V** : High Temperature (0~120°C)
- X** : With Cover

Notes

- ※1. Please indicate the U-cut dimension of the mold.
- ※2. Dimensions in the specification sheet and other documents are in inches. Only mold clamping thickness is indicated by the symbol which is converted into millimeters.

### 5 Switch Load Voltage (Current) Enter this only when selecting Option 3 P: With Mold Confirmation Proximity Switch.

- 5** : DC24V (5~40mA)

Notes

1. Please contact us for specifications and external dimensions for these options.
2. Allowable range of mold clamping thickness differs depending on the clamping force.

## Specifications

Model No.		GBM0250	GBM0400	GBM0630	GBM1000	GBM1600
Clamping Force	kN	25	40	63	100	160
Working Pressure	MPa	25 (For Rated Clamp Force)				
Withstanding Pressure	MPa	37				
Actual Slide Stroke	mm	50	75	100	125	150
Full Stroke	mm	10	12	15	15.5	16
Clamp Stroke	mm	1.5	3.5	1.5	1.5	2
Extra Stroke	mm	8.5	8.5	13.5	14	14
Cylinder Capacity (At Full Stroke)	cm <sup>3</sup>	10	19	38	63	105
Operating Temperature <sup>※3</sup> °C		0~70 (High temperature option is available for 0~120°C)				
Use Frequency <sup>※4</sup>		Less than 20 Cycles / Day				
Pressurizing Agent <sup>※5 ※6 ※7</sup>		General Hydraulic Oil Equivalent to ISO-VG-32				

### Notes

- ※3. Option **V**: High Temperature (0~120°C) is for operating in temperatures of 70°C or more.
- ※4. Please contact us for more frequent use.
- ※5. Please contact us for fluids other than those mentioned on the list.
- ※6. If hydraulic viscosity is higher than specified, action time will be longer.
- ※7. If using it at low temperature, action time will be longer because the viscosity of hydraulic oil becomes higher.

## Allowable Range of Mold Clamping Thickness

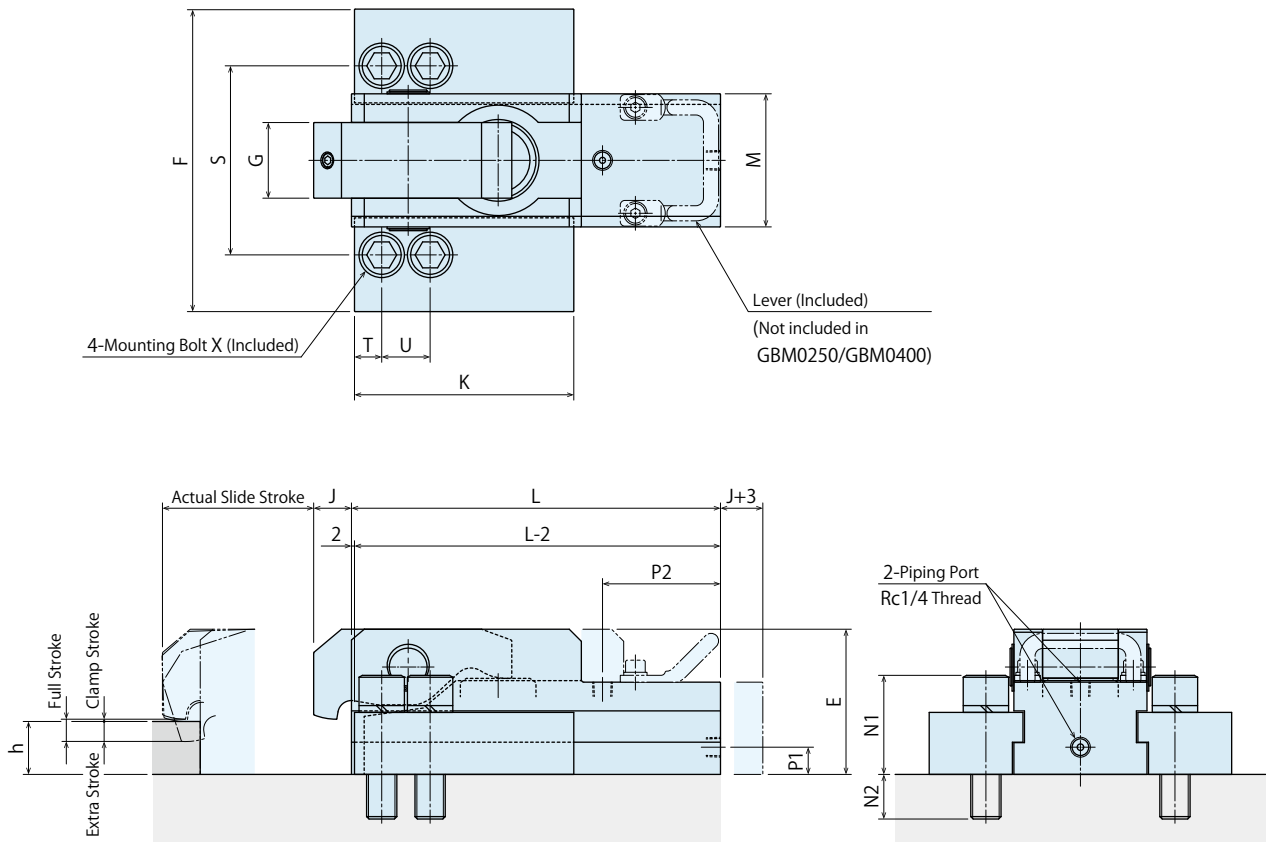
Mold Clamping Thickness	h Dimension	GBM0250	GBM0400	GBM0630	GBM1000	GBM1600
25		20~25	-	-	-	-
30		25~30	25~30	-	-	-
35		30~35	30~35	25~35	-	-
40		35~40	35~40	30~40	-	-
45		40~45	40~45	35~45	35~45	-
50		-	45~50	40~50	40~50	40~50
55		-	-	45~55	45~55	45~55
60		-	-	50~60	50~60	50~60
65		-	-	55~65	55~65	55~65
70		-	-	-	60~70	60~70
75		-	-	-	65~75	65~75
80		-	-	-	70~80	70~80

### Note:

1. When selecting **4** Option N, the mold clamping thickness h dimension will be converted into millimeters .

External Dimensions

※ This drawing shows GBM0250 ~ GBM1600 standard model.  
Contact us for external dimensions for these options.



Notes

1. Do not exceed the clamping force on the specification.
2. Specifications/Contents in this catalog are subject to change without prior notice. Ask for the approval drawing before deciding to purchase.

## External Dimensions

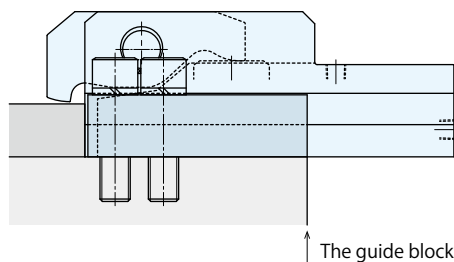
(mm)

Model No.	GBM0250	GBM0400	GBM0630	GBM1000	GBM1600
Actual Slide Stroke	50	75	100	125	150
Full Stroke	10	12	15	15.5	16
Clamp Stroke	1.5	3.5	1.5	1.5	2
Extra Stroke	8.5	8.5	13.5	14	14
E	73	83	96	130.5	143
F	125	150	200	250	285
G	32	38	50	53	60
J	21	22	25	30	30
K	95	115	145	190	225
L	145	190	244	312	372
M	58	68	88	97	117
N1	45.2	57	65.5	76	91.3
N2	16.8	24	29.5	38	48.7
P1	18	20	18	28	24.5
P2	37	55	78	108	128
S	80	100	125	150	175
T	12	15	18	23	30
U	20	25	32	40	50
X	M12 x 1.75 x 50	M16 x 2 x 65	M20 x 2.5 x 75	M24 x 3 x 90	M30 x 3.5 x 110
min. h	20	25	25	35	40
max. h	45	50	65	80	80

Note:

1. If you would like to change the ratio of clamp stroke and extra stroke, please contact us.

## GBM Clamp The Allowable Protrusion Amount



Note:

1. The guide block of GBM clamp should be within the platen when mounting.

# Sales Offices

## Sales Offices across the World

Japan	<b>TEL. +81-78-991-5162</b>	<b>FAX. +81-78-991-8787</b>
Overseas Sales	KOSMEK LTD. 1-5, 2-chome, Murotani, Nishi-ku, Kobe-city, Hyogo, Japan 651-2241 〒651-2241 兵庫県神戸市西区室谷2丁目1番5号	
USA	<b>TEL. +1-630-241-3465</b>	<b>FAX. +1-630-241-3834</b>
KOSMEK (USA) LTD.	1441 Branding Avenue, Suite 110, Downers Grove, IL 60515 USA	
China	<b>TEL.+86-21-54253000</b>	<b>FAX.+86-21-54253709</b>
KOSMEK (CHINA) LTD. 考世美(上海)貿易有限公司	21/F, Orient International Technology Building, No.58, Xiangchen Rd, Pudong Shanghai 200122., P.R.China 中国上海市浦东新区向城路58号东方国际科技大厦21F室 200122	
Thailand	<b>TEL. +66-2-715-3450</b>	<b>FAX. +66-2-715-3453</b>
Thailand Representative Office	67 Soi 58, RAMA 9 Rd., Suanluang, Suanluang, Bangkok 10250, Thailand	
Taiwan (Taiwan Exclusive Distributor)	<b>TEL. +886-2-82261860</b>	<b>FAX. +886-2-82261890</b>
Full Life Trading Co., Ltd. 盈生貿易有限公司	16F-4, No.2, Jian Ba Rd., Zhonghe District, New Taipei City Taiwan 23511 台湾新北市中和區建八路2號 16F-4 (遠東世紀廣場)	
Philippines (Philippines Exclusive Distributor)	<b>TEL.+63-2-310-7286</b>	<b>FAX. +63-2-310-7286</b>
G.E.T. Inc, Phil.	Victoria Wave Special Economic Zone Mt. Apo Building, Brgy. 186, North Caloocan City, Metro Manila, Philippines 1427	
Europe (Europe Exclusive Distributor)	<b>TEL. +43-463-287587-10</b>	<b>FAX. +43-463-287587-20</b>
KOS-MECH GmbH	Schleppplatz 2 9020 Klagenfurt Austria	
Indonesia (Indonesia Exclusive Distributor)	<b>TEL. +62-21-5818632</b>	<b>FAX. +62-21-5814857</b>
P.T PANDU HYDRO PNEUMATICS	Ruko Green Garden Blok Z- II No.51 Rt.005 Rw.008 Kedoya Utara-Kebon Jeruk Jakarta Barat 11520 Indonesia	

## Sales Offices in Japan

Head Office	<b>TEL.078-991-5115</b>	FA	 <b>WAHLTEC</b> <sup>®</sup> KNOWLEDGE   TRUST   SUCCESS
Osaka Sales Office	〒651-2241	兵庫県神戸市西区	
Overseas Sales			
Tokyo Sales Office	<b>TEL.048-652-8839</b>	FA	
	〒331-0815	埼玉県さいたま市	<b>WAHLTEC GmbH</b> Ravensburger Str. 14 88361 Altshausen T: +49 (7584) 9238883 F: +49 (7584) 9238887  <a href="http://www.wahltec.de">www.wahltec.de</a>
Nagoya Sales Office	<b>TEL.0566-74-8778</b>	FA	
	〒446-0076	愛知県安城市美園	
Fukuoka Sales Office	<b>TEL.092-433-0424</b>	FA	
	〒812-0006	福岡県福岡市博多	